

## ASM230X-Loose PCB Signal Converter

- Suitable for use as element in SIL 1, SIL 2 & SIL 3 rated (IEC61508) Safety Instrumented System Loop applications
- Suitable for combinations of Process I/V Inputs & Outputs
- Supply Voltage options **12Vdc, 24Vdc or 48Vdc  $\pm 10\%$**
- Non-Smart/Non-uProcessor based, Type A instrument card
- Amelec standard 10 year warranty

### TECHNICAL SPECIFICATION

#### Input

Any DC voltage or current process signals, which can be routed into a pi network to develop a 400mV span.

#### Typical Input ranges:

0-1mA, 0-5mA, 0-10mA, 0-20mA, 4-20mA  
0-1Vdc, 1-5Vdc, 0-10Vdc, 0-24Vdc, 0-100Vdc

#### Output

The current source can be up to 20mA with a drive voltage of 20V.  
The voltage source can be up to 10V, maximum drive 20mA.

The current output can be configured as a sink or source port by way of connection to the output terminals.  
(Sink port: max 30Vdc external loop supply)

#### Typical Output ranges:

0-10mA, 0-20mA, 4-20mA, 0-1V, 0.5-2.0V, 1-5V, 2-10V, 0-10V dc

#### Performance

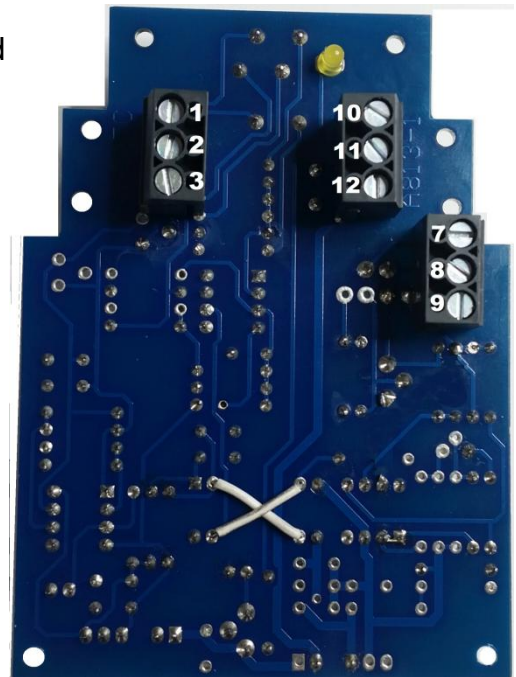
Isolation: 1000V RMS (Input + Output)/Supply  
Accuracy:  $< \pm 0.1\%$  Span  
Linearity:  $< \pm 0.1\%$  Span  
Response time:  $< 100\text{ms}$   
Input Over range:  $\leq 300\%$   
Input O/C response: Downscale drive  
Controls: Zero/Span potentiometers ( $\leq 20\%$  span adjustment)  
Indicator: Power ON (Amber LED)  
DC Supply variation:  $\pm 10\%$

#### Environmental Conditions

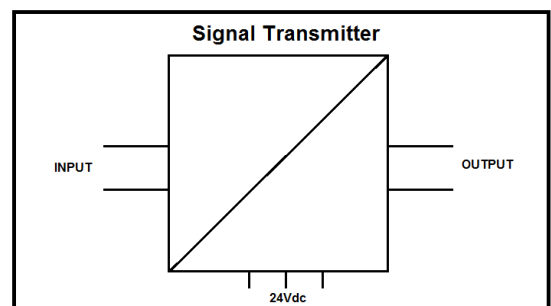
Storage Temperature: -40 to +70°C  
Operating Ambient: -15 to +55°C  
Relative Humidity: 5 – 95% RH (Non-condensing)  
EMC: 2014/30/EU, EN 61326-1:2013 (controlled EM)

#### Dimensions

22.5w x 75h x 110d mm



TB	Ref
1	+ / Input
2	- / Input
3	scn
7	+ / Output
8	- / Output
9	scn
10	Earth
11	+ / Supply
12	- / Supply



Tel: 01908-567003 Email: [sales@amelec-uk.com](mailto:sales@amelec-uk.com) Visit: [www.amelec-uk.com](http://www.amelec-uk.com) Fax: 01908-566735

**AMELEC Instruments, Cochran Close, Crownhill, Milton Keynes, MK8 0AJ**