

ASC231 Signal Converter / Transmitter / Splitter

- Suitable for wide range of Process inputs
- Supply voltage: 20 - 56Vdc / 85 - 264V AC
- CE & RoHs compliant
- Detachable plug/socket terminal blocks

APPLICATION

- Signal isolation / conversion.

TECHNICAL SPECIFICATION

INPUT

DC current or voltage Selectable by DIP switch /
Terminals in the following ranges:

Current: 0 - 10mA, 2 - 10mA, 4 - 20mA

Voltage: 0 - 5V, 1 - 5V, 0 - 10V

Typical input range: 0 - 10mA

OUTPUT1

DC current or voltage Selectable by DIP switch /
Terminals in the following ranges:

Current: 0 - 10mA, 2 - 10mA, 4 - 20mA

Voltage: 0 - 5V, 1 - 5V, 0 - 10V

OUTPUT2

DC current or voltage Selectable by DIP switch /
Terminals in the following ranges:

Current: 0 - 20mA, 4 - 20mA, 0 - 10mA

Voltage: 0 - 5V, 1 - 5V, 0 - 10V

Typical output range: 4 - 20mA

CONTROLS

15 turn potentiometer.

2 x Zero \pm 10% per output

2 x Span \pm 10% per output

INDICATOR

Power ON: LED, Red.

Signal status: LED, Green.

PERFORMANCE

Response time: Typically < 400mS

Accuracy: < \pm 0.2%

Supply regulation: \pm 20%

Supply consumption: <3.5VA

PROTECTION

Input OC drive: Down scale

Isolation: IP/OP1/OP2/Supply

Input over range up to typically 300%.

ENVIRONMENTAL CONDITION

Storage temperature: - 0 to +6

Operating Ambient: 0 to +55 C

Relative Humidity: 5 to 95% RH

TERMINATION

I/P Voltage +	1
I/P Com -	2
I/P Current +	3
	4
Supply +	5
Supply -	6
O/P1 Voltage +	7
O/P Com -	8
O/P1 Current +	9
O/P2 Voltage +	10
O/P Com -	11
O/P2 Current +	12

Optional second output

FRONT VIEW



FUNCTION BLOCK DIAGRAM

4 Way Dip Switch					
Input	1	2	3	4	
0 -5V					
0-10V		on			
1-5V			on	on	
2-10V		on	on	on	
0-10mA	on				
2-10mA	on		on	on	

6 Way Dip Switch						
Output	1	2	3	4	5	6
0 -5V		on	on	on		on
0-10V		on		on		on
1-5V	on		on	on		on
2-10V	on			on		on
0-10 / 0-20mA		on			on	
2-10 / 4-20mA	on				on	

Note :- Range change may require recalibration

WIRING/MOUNTING / DIMENSION

Detachable plug/socket terminal blocks

Enclosure: 17.5w x 94h x 94d

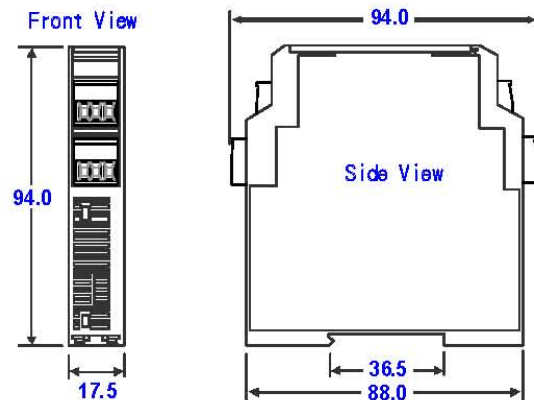
Mounting: Din rail

Weight < 200g

ASC231 Signal Converter / Transmitter / Splitter

DIMENSION

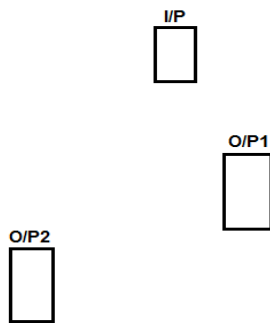
All dimensions are in mm.



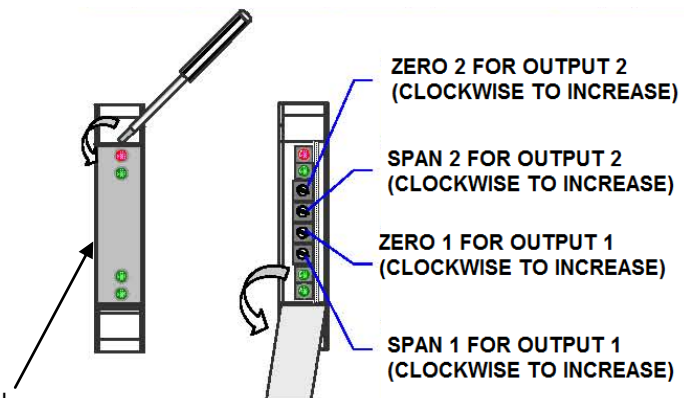
CALIBRATION

After range change recalibration may be required. Please see below drawing showing how to gain access to calibration controls.

DIP SWITCH LOCATIONS

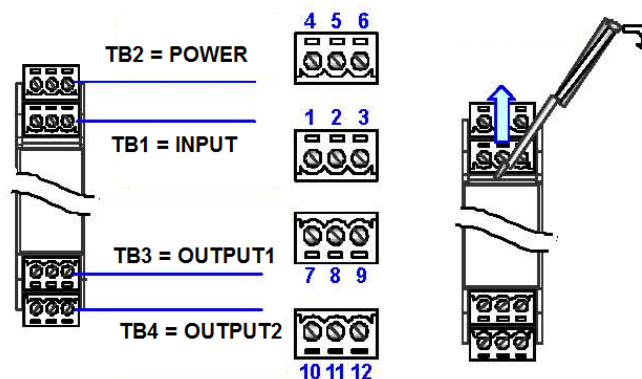


To gain access to dip switches remove this side panel



WIRING

The terminal blocks are detachable for easy installation and maintenance. When removing plugs do not pull by wiring but using small screw driver prise the plug up.



SAFETY NOTE:

Voltage(s) directly connected to this instrument and its internal voltages may be high and dangerous. For this reason, this product should be installed by a competent person. If the unit fails to operate correctly than first check if the wiring is correct. Under no circumstance the unit to be taken apart to gain access to internal circuitry for any reason whilst it has live cables connected.