

APM489-72 Moving Coil Meter

Suitable for measurement of DC Current or Voltage. Jewel and pivot movement ensures reliability and accuracy.

Technical Specification

Input - Current

0-50uA to 0-40A direct connected,
> 0-40A use shunt and mV Voltmeter.
Can be driven from a transducer output,
4-20mA process loop input available.
Voltage Drop: Ammeter <100mV

Input - Voltage

0-50mV to 0-800V Direct Connected
Current Consumption: <200V 1mA, >200V 200uA

Display

Scales are linear and calibrated from zero to full scale.
Scaleplates are available in any process unit including;
A, V, °C, bar, rpm, kW and %
Available in shortscale (90° sweep) and longscale (240° sweep)
Special scaled plates are available on request

Accuracy Class: 1.5 ($\pm 1.5\%$ max.error)

Customer Termination

The customer connection is at the rear, via 2 stud terminals.

Panel Fixing Details

The customer panel cut out hole needs to be 68mm square with the enclosure held into the panel by clamp. The customers panel must be no more than 10mm thick.

Environmental Conditions

Storage Temperature: -40 to +70°C
Operating Ambient: -20 to +50°C
Relative Humidity: 0 to 90% (Non-condensing)

Vibration/Seismic Qualification

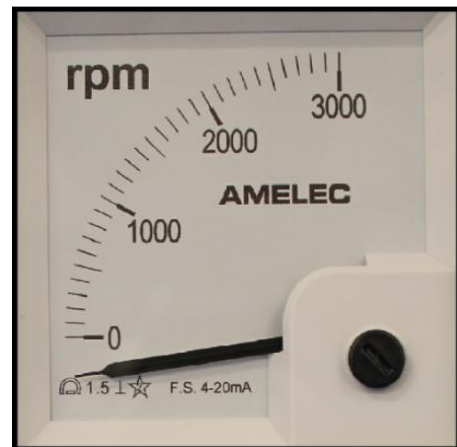
min vibration of ± 0.25 mm amplitude at a frequency of 50Hz, corresponding to an acceleration equal to 2.5 g, in three perpendicular axes for 20 minutes.

Dimensions

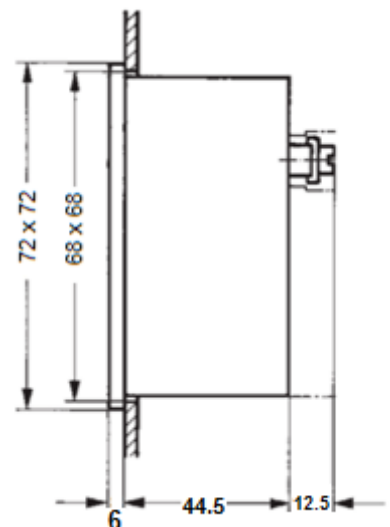
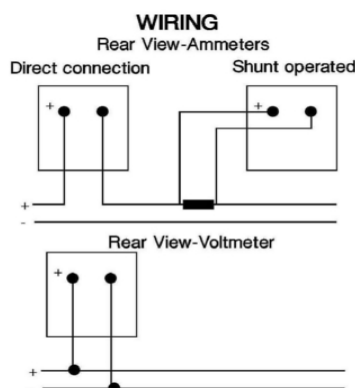
Bezel size: 72 x 72 mm
Cut-out Size: 68 x 68 mm
Depth: 54 mm including terminals
IP rating: IP54 Front of panel as std
(IP65 front of panel sealing gasket available)

Enclosure

Weight: <200g
Flame retardant white ABS plastic case with black bezel.
Case IP52 to IEC529 and BS5490 (IP65 all round sealing optional)



Dimensions (mm)



Tel: 01908-567003 Email: sales@amelec-uk.com Visit: www.amelec-uk.com Fax: 01908-566735

AMELEC Instruments, Cochran Close, Crownhill, Milton Keynes, MK8 0AJ