

APM489-144 Moving Coil Panel Meter

Moving Coil meters are suitable for measurement of DC current or voltage. All meters have a jewel and pivot movement which ensures reliability and accuracy.

Technical Specification

Input - Current

0-50uA to 0-40A direct connected > 0-40A use and mV Voltmeter 4-20mA Can be driven from a transducer output.

Input - Voltage

4-20mA Max 30V external
1-5Vdc Min 200K

Display

Scales are linear and calibrated from zero to full scale. Scaleplates are available in any process unit including; A, V, °C

Available in shortscale (90° sweep)

And longscale (240° sweep)

± 1.5% max. error

Voltage Drop:

<60mV

Current Consumption:

6mA ±20%

Customer Termination

The customer gains entry at the rear via 2 stud connectors.

Panel Fixing Details

The customer panel cut out hole needs to be 138mm square with the enclosure held into the panel by clamp.

The customers panel must be no more than 32mm thick.

Environmental Conditions

Operating Ambient: -5°C to +55°C

Relative Humidity: 5 to 95% RH

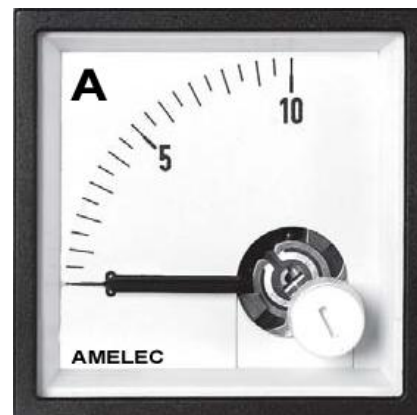
Dimensions

Bezel size: 144 x 144 mm

Cutout Size: 138⁺¹ x 138⁺¹ mm

Depth: 65 mm including terminals

IP rating: IP54 Front of panel

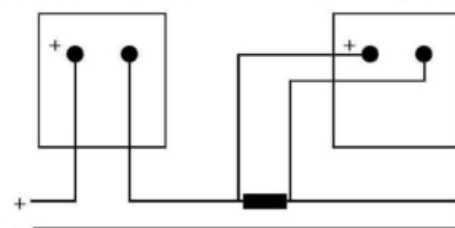


WIRING

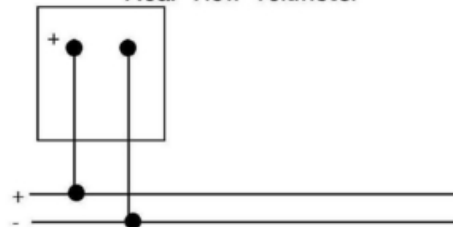
Rear View-Ammeters

Direct connection

Shunt operated



Rear View-Voltmeter



Dimensions (mm)

