

ADT151KX-3 Phase Failure Trip Amplifier

- Suitable for SIL 1, 2 or 3 (IEC61508) applications
- Suitable for 3 phase of AC Current/Voltage Inputs
- Supply voltages: 115Vac $\pm 20\%$
240Vac $\pm 20\%$
24Vdc $\pm 2.5V$
48Vdc $\pm 5V$
110Vdc $\pm 10V$
- RFI Protection Immunity to IEC61000-4-3 (20-1000MHz, <10V/m)

Technical Specifications

Input

3 x nom 230Vac or 400 Vac (over range protection over 440Vac / 600Vac respectively)

Isolation

1000V RMS Input/(Output+Supply+Earth), 500Vdc Output/Supply/Earth
Input Open Circuit Response: Downscale

Performance

Trip: Any one of three phases Input deviates $\geq \pm 10\%$ nom range from the set point. Factory set but **set point** adjustable over 0-250Vac/0-440Vac range respectively by fifteen turn blindset potentiometer through front fascia.

Latching relay: D.P.C.O rated to suit application (nom 24V, 6W) inductive loads, De-energise on Trip.
Front fascia Red LED indication of Relay Status, ON Energised healthy, Extinguish on Trip.

Trip Reset: Remote Contact Closure (pulsed/1-2 sec. duration)

Trip settability: $\pm 1\%$
Trip repeatability: $\pm 0.1\%$
Response time: <400ms

Environmental Conditions

Storage Temperature: -40 to 70°C
Operating Ambient: -15 to 55°C
Relative Humidity: 5 – 95% RH

Mounting/Dimensions

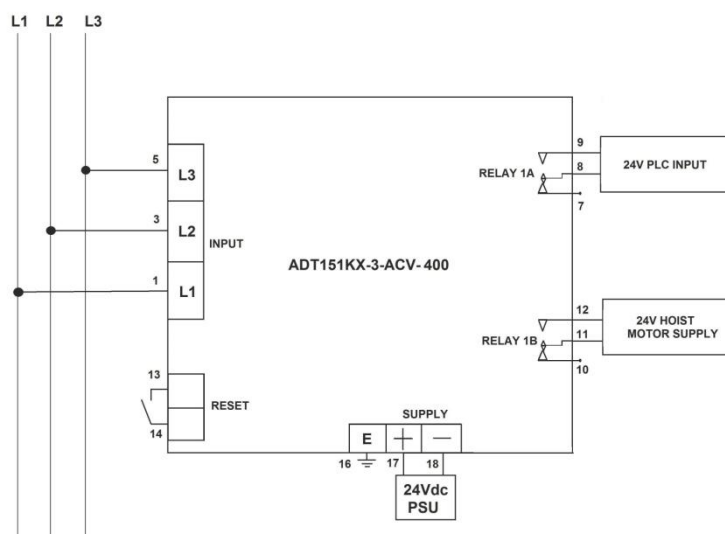
Heavy duty DIN Rail or Surface by seismic Keyhole plate
50w x 75h x 182d (mm)
(optional Surface/Seismic mounting plate Dims: 50w x 130h mm)



Top view



Bottom view



Tel: 01908-567003 Email: sales@amelec-uk.com Visit: www.amelec-uk.com Fax: 01908-566735

AMELEC Instruments, Cochran Close, Crownhill, Milton Keynes, MK8 0AJ