

## ADG240-GRA-NI NTC Thermistor Signal Conditioner / Isolator

- uProcessor based, Type B instrument
- NTC Temperature Sensor input, non-linear High Resistance signal ranges
- Non-Isolated & Linearised Output signal to PLC, Datalogger or other Device
- Ultra slim Compact Design, up to 30 units along 12" length of Din Rail
- 6 Year Warranty
- Universal DIN Rail Mounting, suitable for TS35 Top-Hat & TS32 G-Rails

### Technical Specification

#### Input Options

Any NTC Thermistor type may be specified, together with the temperature measurement range to suit customer application.

#### Non-Isolated Output

0-10Vdc (@10mA) Min load 1K $\Omega$

#### Supply

24Vdc  $\pm$ 10% std.  
(Red LED Power **ON** indicator)

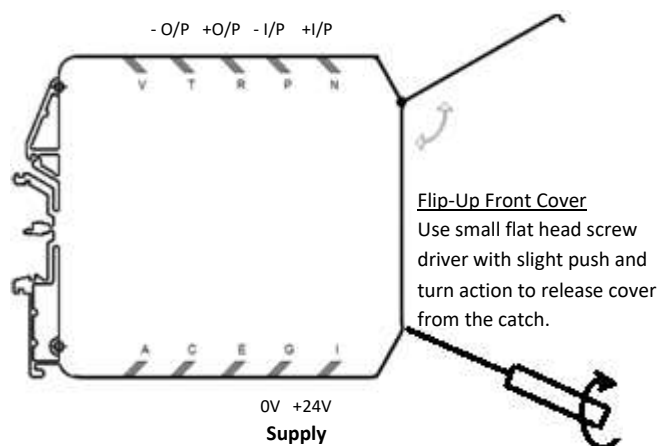
#### General Specification

Isolation: 1000V RMS (Input+Output)/ Supply  
Accuracy:  $<\pm 0.2\%$  span  
Response Time:  $<200\text{ms}$  (0-100% step)  
Vibration: 1g at 15Hz to 150Hz  
Low Power Consumption: 1.5Watts  
IP Rating: IP20  
Weight: 75g

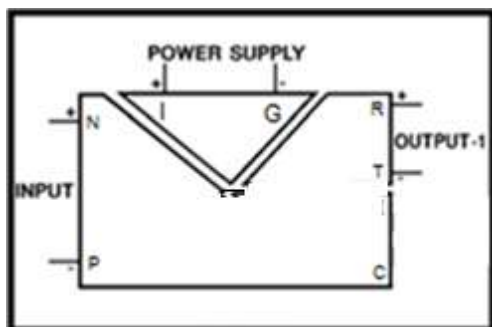
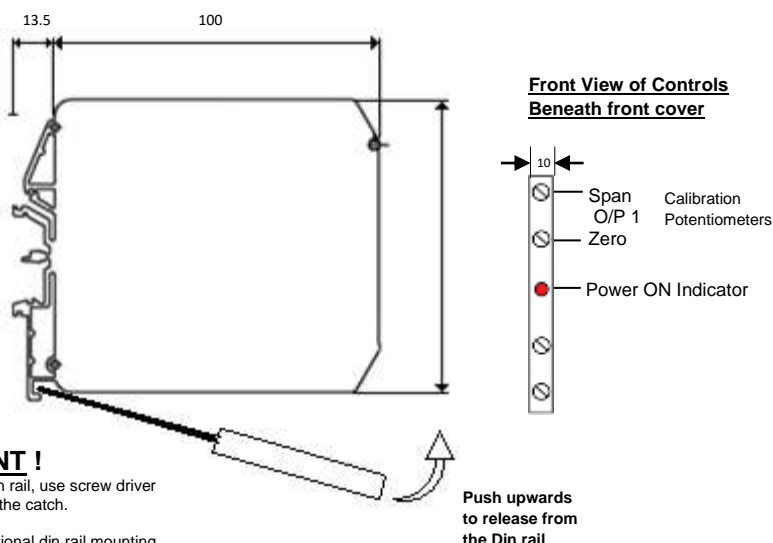
#### Environmental Conditions

Operating Ambient: -15 to +55°C  
Relative Humidity: 5 to 95% RH (Non-Condensing)  
EMC: 2014/30/EU, EN 61326-1:2013 (Controlled EM)  
RoHS: 2011/65/EU

(Dummy units available if planning for future expansion)



**Overall Dimensions: 10w x 90h x 113.5d mm:**



#### ! IMPORTANT !

To dismount from Din rail, use screw driver as shown to release the catch.

(Please refer to additional din rail mounting instruction sheet for further guidance, available on request if needed)

Tel: 01908-567003 Email: [sales@amelec-uk.com](mailto:sales@amelec-uk.com) Visit: [www.amelec-uk.com](http://www.amelec-uk.com) Fax: 01908-566735

**AMELEC Instruments, Cochran Close, Crownhill, Milton Keynes, MK8 0AJ**