

## ACT150 Current Transformer

- Split core CT for easy Installation
- Non intrusive monitoring
- 2 year guarantee as standard
- CE compliant
- Low clamped Isolated O/P - Connect directly to PLC
- Mounting - Clip / Din rail / Surface

### APPLICATION

- Motor / Heating element current monitoring.
- AC current signal conditioning.

### TECHNICAL SPECIFICATION

#### INPUT

Current can be specified in the range of:  
 0 - 5A, 0 - 10A, 0 - 20A, 0 - 50A, 0 - 100A, 0 - 200A.  
 Other intermediate ranges available on request.  
 Bandwidth: 30 to 400Hz nominal, other ranges available.

#### OUTPUT

Current = 2000:1  
 Typical range 0 - 50A = 0 - 25mA

Voltage = Any range can be specified up to 25Vac.  
 Typical range 0 - 50A = 0 - 1Vac

Linearity: <  $\pm 0.3\%$   
 Accuracy: <  $\pm 2\%$   
 Response time: Typically < 400mS  
 Calibration: Average RMS

#### Protection

Isolation 2000V RMS. Input / Output / Case  
 Input over range up to 200% continuous.  
 Enclosure: ABS (UL 94V-0) / IP20  
 Secondary Open circuit protection

#### ENVIRONMENTAL CONDITION

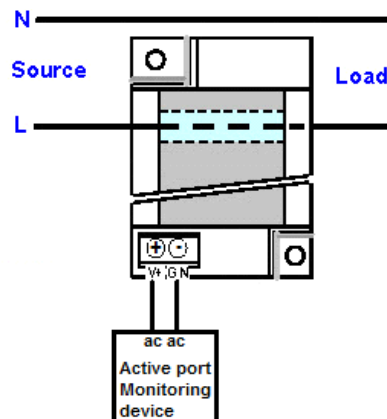
Storage temperature: - 10 to +70 °C  
 Operating Ambient: -10 to +50 °C  
 Relative Humidity: 20 to 95% RH  
 Temp Coefficient:  $\leq 200$ ppm

#### MOUNTING

Mounting: Din rail / Surface  
 Weight < 150g  
 Installation: CAT II

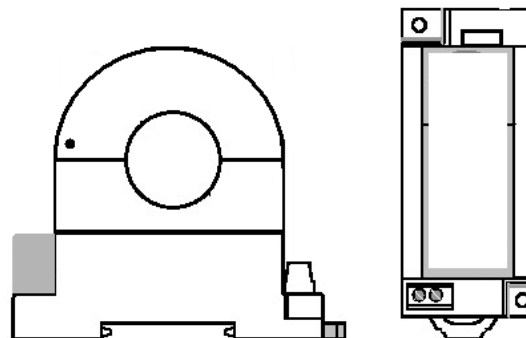


#### WIRING



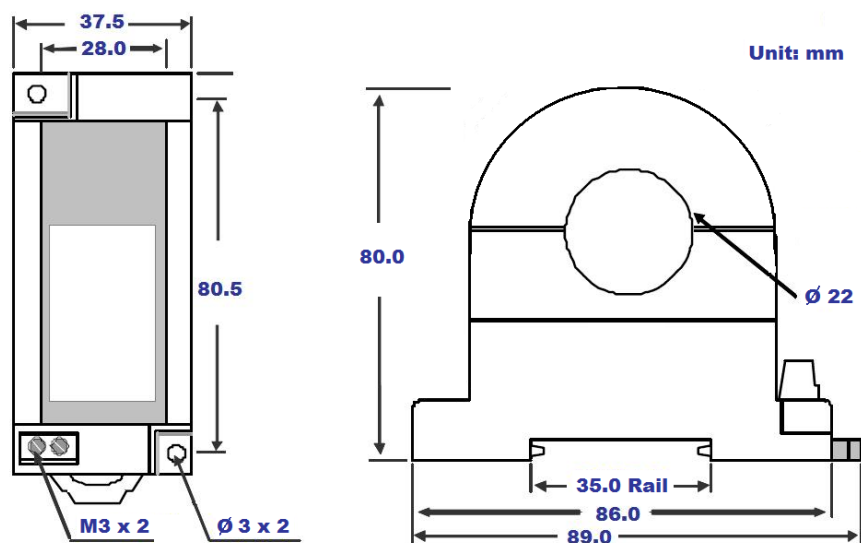
Wiring terminal:  
 5A/300Vac, M2.0, 0.5~1.3mm<sup>2</sup> (22~16AWG)

#### GA



## ACT150 Current Transformers

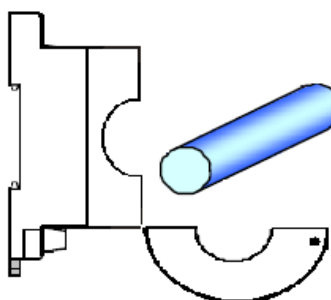
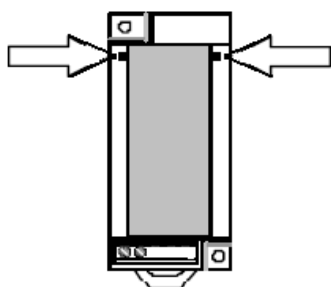
### DIMENSION



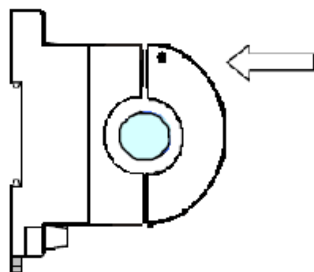
### INSTALLATION

To avoid damage to the case, input cable should be formed to shape and supported. Use surface mount option instead of din rail for more secure fixing.

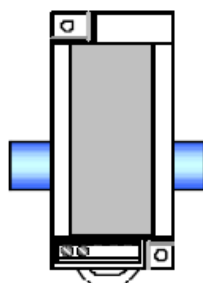
1. Push the two side buttons simultaneously to release.
2. Place the cable.



3. Push to lock.



4. Finish



### SAFETY NOTE:

Although the voltage(s) directly connected to this instrument and its internal voltages are low. The cable running through the split core may carry dangerous high voltage. For this reason, this product should be installed by a competent person. If the unit fails to operate correctly than first check if the wiring is correct. Under no circumstance the unit to be taken apart to gain access to internal circuitry for any reason whilst it has live cable through the split core.