

ACC374X Pulse Count Trip Amplifier

- Supply voltage: 24Vdc / 115Vac / 230Vac
- Amelec standard 10 year guarantee
- Suitable for SIL Level 1, & 2 (IEC 61508-2)

TECHNICAL SPECIFICATION

INPUT

Can be configured to accept contact closures, open collector, 5V pulses, 24V pulses, low level AC and high level AC signals.

Input Amplitude +/- 0.5 to 100V max
Frequency range 0 Hz to 100Hz.

RESET

Volt free or positive voltage pulse can be applied to reset the counter to zero. (5 min, 24V max)

OUTPUT

1 x DPCO contacts, rated at 250VAC, 2A, 100VA resistive.
(Relay Normally Energise, De-energised on trip)

CONTROLS

Zero / Span (+/- 20%): 15 turn potentiometers for dail calibration.

Trip 1: Single turn potentiometer to set trip point in the range of 0 to 110%.

INDICATOR

Power ON: LED, Amber.

Relay status: LED, Red.

PERFORMANCE

Accuracy: < ±0.2%

Resolution: 10bit (1024 counts)

PROTECTION

Isolation 1000V RMS.

Input + Reset /Output/Supply/Earth

Internal Fuse.

Input over range up to typically 300%.

ENVIRONMENTAL CONDITION

Storage temperature: - 40 to +70 °C

Operating Ambient: -15 to +55 °C

Relative Humidity: 5 to 95% RH

MOUNTING / DIMENSION

Enclosure: 197d x 217h x 60.5w

Mounting: Surface (optional Panel Mount)

Weight < 1.5kg

ADD ON / OPTIONS

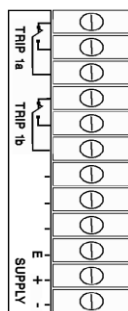
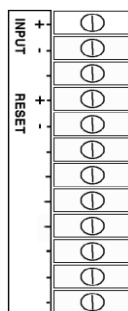
DI: LCD display for local monitoring

J : Input injection jack socket

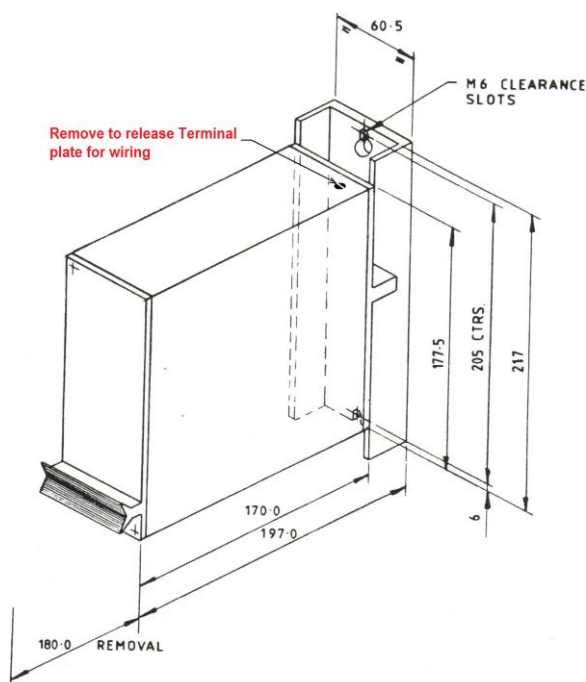
K: Higher level of RFI protection (Up to 10V/mtr)

Non standard Power supply ranges available

TERMINATION

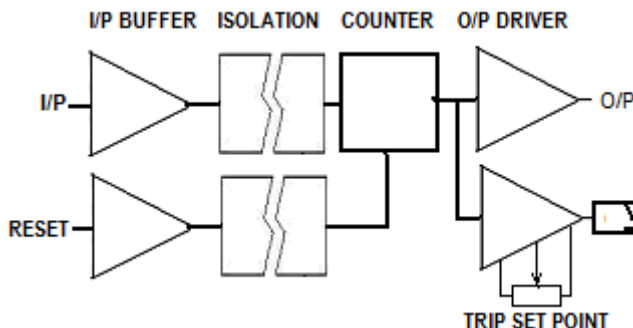


FRONT VIEW



The terminal plate can be removed from the case by removing the M4 hexagon headed screw at the top rear of the case, hinging the case downwards and unhooking it from the fixed peg at the lower rear of the terminal plate assembly. This exposes the terminal plate for wiring.

FUNCTION BLOCK DIAGRAM



Basic function of the unit is to monitor the input and count the number pulses. The total of the count is compared against the trip set point. When the total exceeds the set point, the relay is tripped. The counter can be remotely reset by a pulse.