

ACC314X-3-RTD-4W Three Input Temperature Averager

- Suitable for SIL 1 & SIL 2 rated (EN 61508) safety instrumented system (SIS) loop applications, as 1oo1 architecture (HFT:0)
- Non-Smart / Non-uProcessor, Type 'A' instrument
- Supply Voltage options: 24Vdc or 48Vdc or 110Vdc ($\pm 10\%$), 115Vac or 230Vac ($\pm 20\%$)
- Amelec Standard 10 year warranty

Input (x 3)

Any 4-wire PT100 resistance temperature sensor.
(PT130 / PT500 / PT1000 & 3 wire input options available)

Typical Input ranges

-15 to +25°C, 0-50°C, 0-100°C, 0-150°C / PT100, 4-wire connection

Output

Any standard process current or voltage in the range of;
Current source up to 22mA max, with drive voltage 12Vdc
(Current Sink option available, 30Vdc max external drive)
Voltage source up to 10V max output
Typically: 4-20mA (max load 550 Ω) or 0-10Vdc (min load 500 Ω)

Performance

Equation: $\text{Input A} + \text{B} + \text{C} / 3 = \text{Output}$
Accuracy/Linearity: $< \pm 0.1\%$ resistance Span as standard
(Linearisation to temperature 'G' option available)
Response Time: $< 400\text{ms}$
Input over range: up to 300%
Input Open Circuit response: Upscale drive as standard
(Input O/C Downscale drive 'X' option available)
Controls: Front fascia Zero/Span pots for each input channel
Supply consumption: $< 3\text{VA}$

Environmental Conditions

Storage temperature: -40 to 70°C
Operating ambient: -15 to 55°C
Relative humidity: 5-95 % RH
(Non-condensing)
EMC: 2014/30/EU, EN 61326-1:2013
(Controlled EM)

Isolation

1000V RMS
Inputs/Output/Supply/Earth

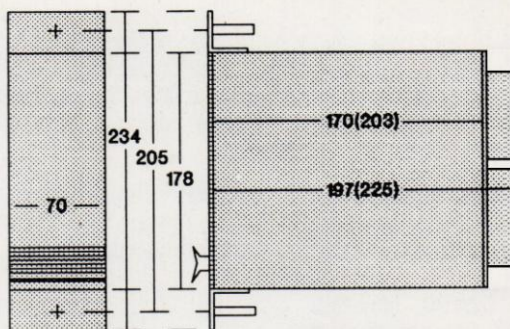
Mounting

Front of Panel

Dimensions

Front Bezel: 70x x 234h mm
Housing: 60.5w x 178h x 197d mm
(Cut Out: 65w x 190h mm)

Panel mounting - ATA / AMT / ACC series



A 65mm wide by 190mm high aperture must be cut in the front panel with 6mm fixing holes above and below. The brackets and front panel are wider than the aperture to obscure any cut edges.

Wiring / Rear Terminals

